

# EZ-GUIDE 250 SYSTEM

The EZ-Guide® 250 system provides high-quality, entry-level guidance capabilities at an entry-level price. Make your broadacre crop applications easier and more productive—day or night.



## SIMPLE INSTALLATION AND EASE OF USE

With its color display, one-touch function buttons, and intuitive interface, the EZ-Guide 250 system allows you to quickly access guidance lines and coverage maps and easily perform your day-to-day farming tasks.

## ENHANCED PERFORMANCE

By offering overhead and perspective views of your field, the EZ-Guide 250 system allows you to easily see where you are and where you have been. It also features bright guidance LEDs that provide visual feedback to keep you on track.

## BASIC SATELLITE COVERAGE AND ACCURACY LEVELS

The EZ-Guide 250 system is compatible with the GPS satellite constellation in many areas of the world. Get submeter pass-to-pass accuracy with SBAS—ideal for farming applications that can be accomplished with lower-accuracy corrections.

## DISPLAY FEATURES

- Compact 4.3" color display
- One-touch function buttons
- Rugged construction for everyday field use
- 15 built-in LED lights
- High-performance, integrated GPS receiver

## KEY PRECISION AGRICULTURE CAPABILITIES

- Manual guidance and mapping
- Trimble® steering system compatibility
- USB data transfer for in-office analysis

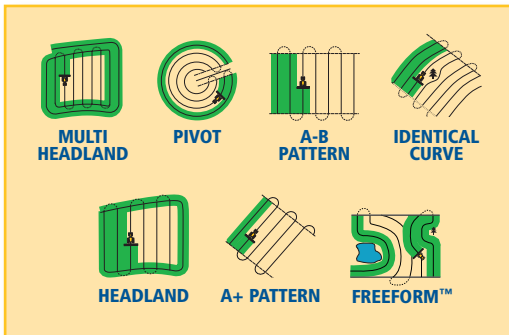


## AVAILABLE ACCURACY LEVELS



Trimble Agriculture. The line everyone follows.

# HIGH-QUALITY, ENTRY-LEVEL GUIDANCE CAPABILITIES AT AN ENTRY-LEVEL PRICE



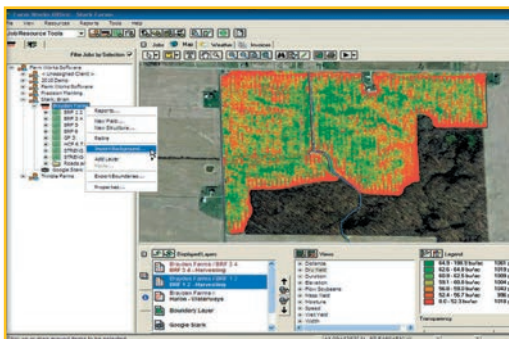
## FEATURE MAPPING

Perform point, line, coverage, and area mapping in a variety of field patterns. This flexibility allows you to work in different patterns and shapes that best fit the layout and contours of your field.

## HANDS-FREE GUIDANCE CAPABILITIES

Upgrade to the Trimble EZ-Steer® assisted steering system to complete your total guidance package. The EZ-Steer system turns the steering wheel by combing a friction wheel and electric motor—so you can operate with ease.

Easily install and transfer the EZ-Steer system from vehicle to vehicle for use in all stages of the crop cycle.



## INFORMATION EXCHANGE AND FARMING SOFTWARE

Transfer your collected data from the field to the office using a USB drive. Use this data within Farm Works Software® solutions for accurate analysis and record keeping for your farming operations.